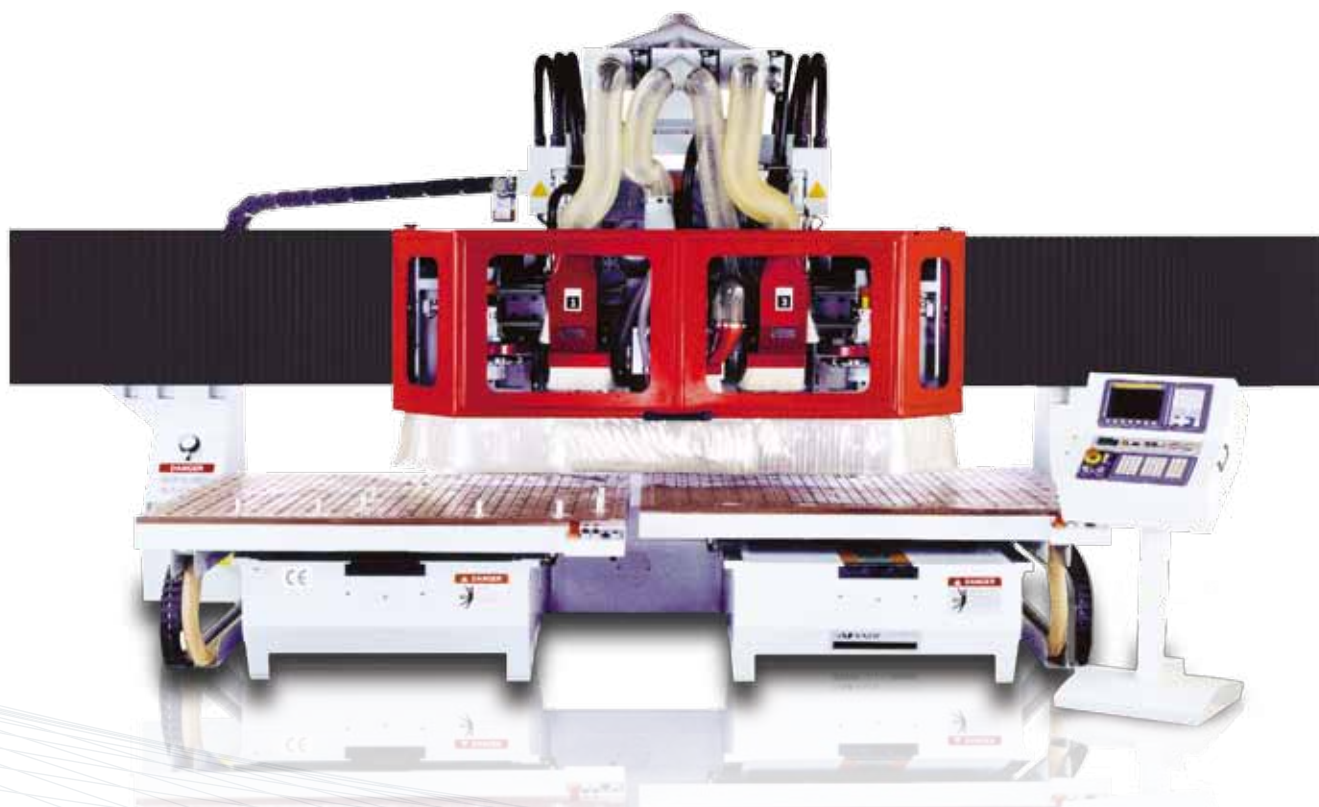


THE EXXCEL SERIES

MOVING TABLE | HIGH PRECISION LINEAR DRIVE



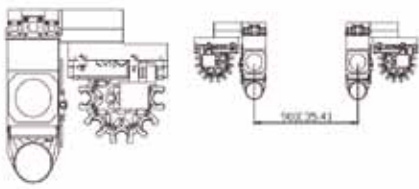
The EXXCEL Series Moving Table 3-axis machining centers set a new level of very High Precision CNC accuracy and machining performance. The combination of a highly rigid base, steel weldments and castings and high accuracy Linear Motor Servo System make the EXXCEL an ideal choice for machining wood, MDF, plywood, plastic, aluminum and composite materials.

The Anderson fixed bridge, moving table design and all magnetic drive motors make the EXXCEL one of world's fastest and accurate CNC machining centers. The webbed steel substructure and Linear motor drives provide the EXXCEL with a very rapid acceleration profile as well as superior accuracy and extremely low vibration. The EXXCEL CNC machining centers

set a new standard in very high precision, high speed CNC machining. The EXXCEL CNC machining center is designed to handle high speed CNC machining, trimming, slotting and drilling on all types of hardwoods and more. CNC Controls include Ethernet options to provide remote technical support; optional C-axis is available.

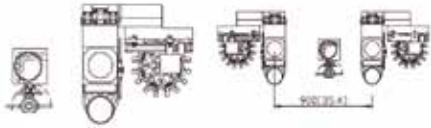
Work piece holding flexibility is provided by optional clamping, grid or manifold vacuum systems. The EXXCEL CNC Machining Center utilizes an industry standard G-code for control functions that allows easy interfacing with all major CAD/CAM software and industry standard solid modeling software packages. Additional options include work piece dimension probing, both single and dual zone capabilities and custom configurations upon request.

Basic configuration	EXXCEL	EXXCEL duo
No. of tables	1	2
No. of vacuum zones per table	1	1
Table size X	3700 mm (146 in)	2x 1840 (73 in)
Table size Y	1600 mm (63 in)	1600 mm (63 in)
Stroke of X-axis	4450 mm (175 in)	4450 mm (175 in)
Stroke of Y-axis	1800 mm (71 in)	1800 mm (71 in)
Stroke of Z-axis	300 mm (12 in)	300 mm (12 in)
Rapid travel Speed in X	100 M/min	100 M/min
Rapid travel Speed in Y	100 M/min	100 M/min
Rapid travel Speed in Z	30 M/min	30 M/min
Spindle Data		
Power	15 HP	15 HP
Max. Speed (rpm)	1000-22000	1000-22000
Clamping system	HSK-63F	HSK-63F
Tool changer	max 32	max 32
Boring block	Anderson Type	Anderson Type
Vacuum pump	25 HP	25 HP
Controller	ANDI-FANUC	ANDI-FANUC
Dimensions: Floor Area	6500 x 4200 mm (256 x 165 in)	6500 x 4200 mm (256 x 165 in)
Height	3300 mm (130 in)	3300 mm (130 in)
Weight	11000 kg	11000 kg



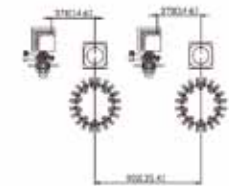
TC / TC2

One or two ANDI HSK 63 F Spindles with 10-position tool carousel available.



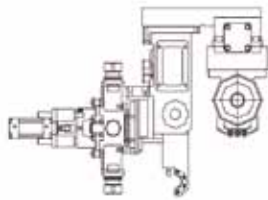
TC+D / TC2 +D

One or two ANDI HSK 63 F spindle with 10-position tool carousel. One 32mm Vertical Drill Blocks with horizontal drills and slotting saw.



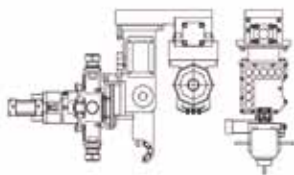
TC2 / D2

One or two ANDI HSK 63 F spindle with 10-position tool carousel. Two 32mm Vertical Drill Blocks with horizontal drills and slotting saws.



RAN

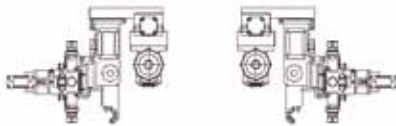
One ANDI HSK 63 F Spindles with 12, 16 or 32-position tool carousel available.



RAN+D

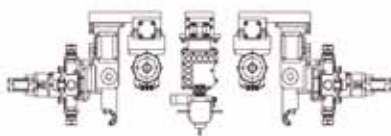
One ANDI HSK 63 F spindle with 12, 16 or 32-position tool carousel.

One 32mm 5 x 5 Vertical Drill Block with horizontal drills and slotting saw.



MH

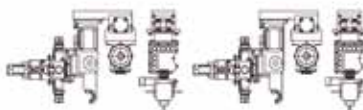
Two ANDI HSK63F spindle with 12, 16 or 32-position tool change RanRob system



MH+D

Two ANDI HSK63F spindle with 12, 16 or 32-position tool change RanRob system.

Two ANDI HSK 63 F spindle with 12, 16 or 32-position tool carousel. One 32mm 5 x 5 Vertical Drill Block with horizontal drill and slotting saw.



MH+D2

Two ANDI HSK 63 F spindle with 12, 16 or 32-position tool carousel. Two 32mm 5 x 5 Vertical Drill Blocks with horizontal drill and slotting saw.



A 10-position traveling tool carousel is standard on all EXXCEL models with various options for expanded tool storage available.



The EXXCEL Series is available with multiple 32 mm line boring units with vertical, horizontal and grooving saw options.



Various line boring unit, spindle and tool carousel combinations allow customers to configure the machine for their specific application and budget.